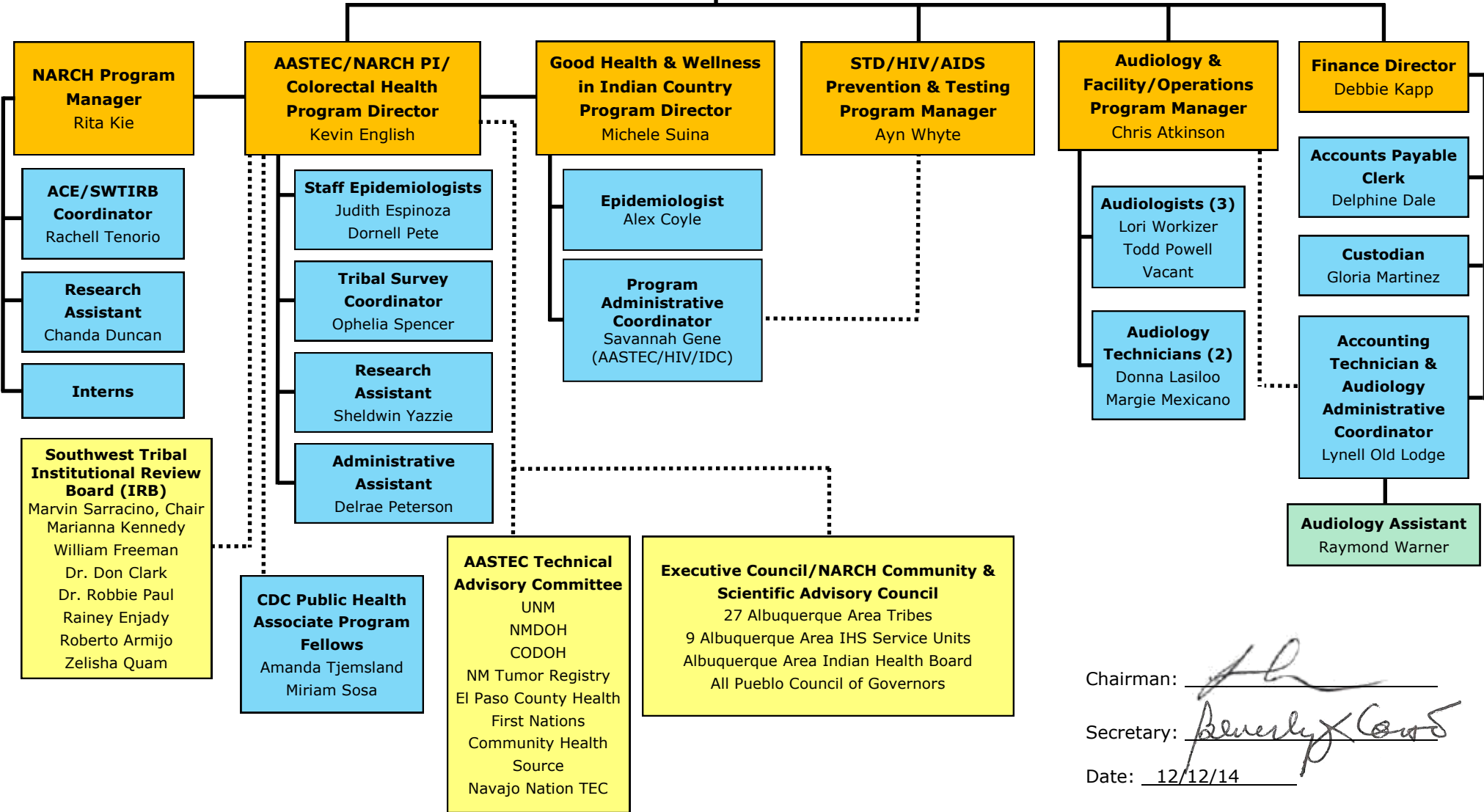


ALBUQUERQUE AREA INDIAN HEALTH BOARD, INC.

Board of Directors	
TOHAJILEE NAVAJO CHAPTER-Lester Secatero, Chairman	MESCALERO APACHE TRIBE-Pamela Cordova
UTE MOUNTAIN UTE TRIBE- Gary Hayes, Vice Chairman	JICARILLA APACHE NATION-Michelle Gomez/Donnie Garcia
RAMAH NAVAJO CHAPTER- Beverly Coho, Secretary/Treasurer	SOUTHERN UTE INDIAN TRIBE- Lola Osawe

Executive Director
Nancy Martine Alonzo



Chairman:

Secretary:

Date: 12/12/14