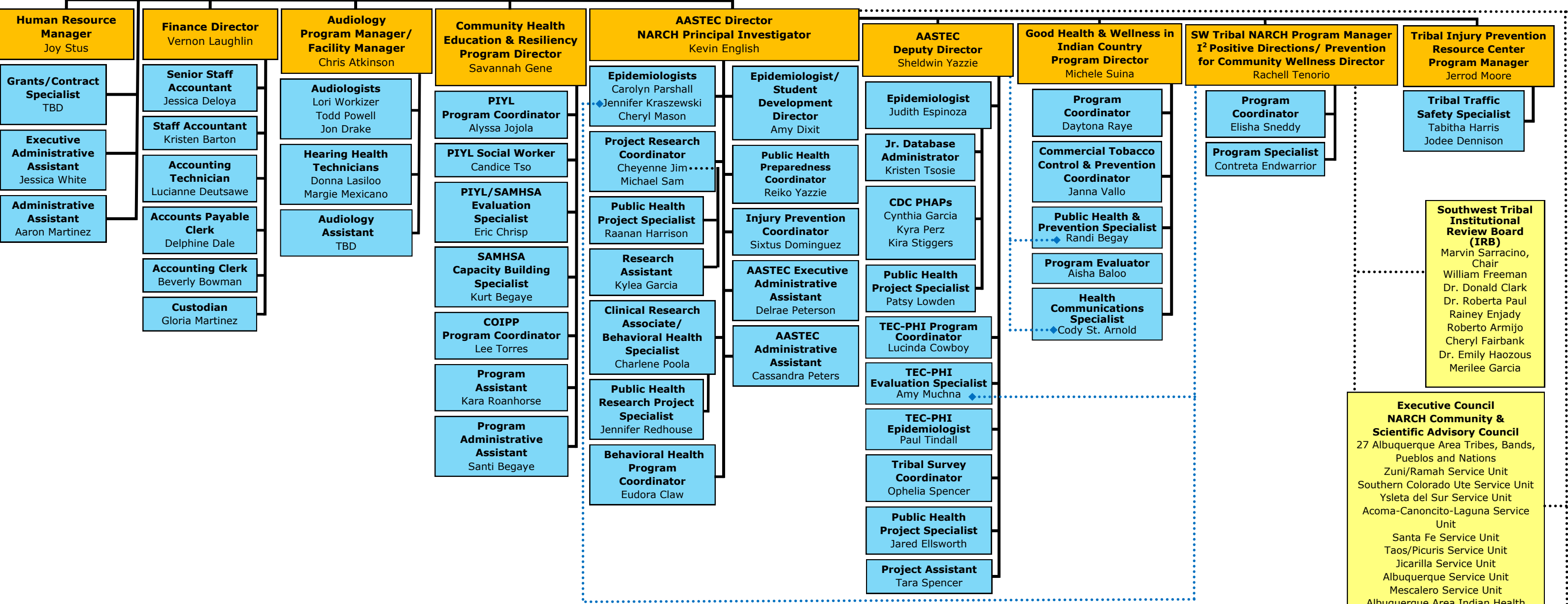



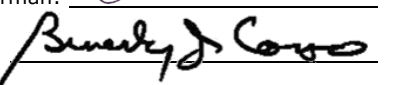
ALBUQUERQUE AREA INDIAN HEALTH BOARD, INC.



Board of Directors
 JICARILLA APACHE NATION-Donnie Garcia
 MESCALERO APACHE TRIBE-Dorlynn Simmons
 RAMAH NAVAJO BAND- Beverly Coho
 SOUTHERN UTE INDIAN TRIBE-Marjorie Barry/Linda K. Baker
 TÓHAJILEE BAND OF NAVAJO-Jaqueline Platero
 UTE MOUNTAIN UTE TRIBE- Selwyn Whiteskunk

Executive Director
 Ayn N. Whyte



Vice Chairman: 
 Secretary: 
 Date: December 10, 2021

**Executive Council
 NARCH Community &
 Scientific Advisory Council**
 27 Albuquerque Area Tribes, Bands,
 Pueblos and Nations
 Zuni/Ramah Service Unit
 Southern Colorado Ute Service Unit
 Ysleta del Sur Service Unit
 Acoma-Canoncito-Laguna Service
 Unit
 Santa Fe Service Unit
 Taos/Picuris Service Unit
 Jicarilla Service Unit
 Albuquerque Service Unit
 Mescalero Service Unit
 Albuquerque Area Indian Health
 Board
 All Pueblo Council of Governors

**AASTEC Technical
 Advisory Committee**
 UNM
 NMDOH
 CODOH
 NM Tumor Registry
 El Paso County Health
 First Nations
 Community Health Source
 Navajo Nation TEC